

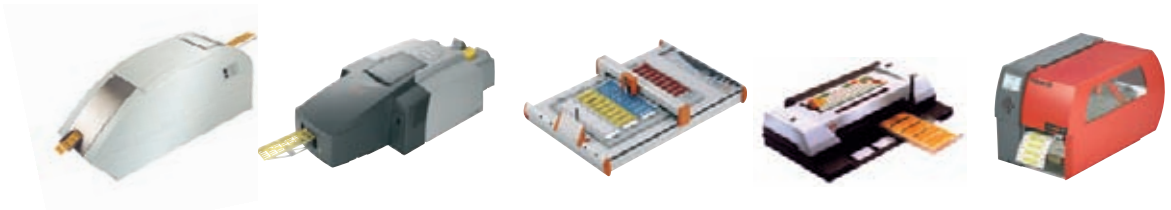
Printing systems

Printing systems	
Introduction	E.2
Laser printer SMark-Laser	E.3
Inkjet printer PrintJet PRO	E.4
Plotter MCP Plus	E.6
MCP Plus – accessories	E.7
Plotter MC-Mobilo	E.8
Thermal transfer printer THM-Plus	E.9
Thermal transfer printer HSS-2001	E.10
Thermal transfer printer THM-Pro	E.11
Software M-Print® PRO	E.12

Printing systems and software

The Weidmüller labelling systems are the quick and efficient way of producing markers for connectors, wires, cables and devices, plus labels for general use. The **M-Print® PRO** software enables users to mark electrical equipment quickly and simply. For professional and fast design, printing and ordering of your marking requirements. Borders, barcodes, graphics or photos can all be easily integrated. The multitude of data conversion routines presents you with fast and flexible options for data integration. The Weidmüller **SMark-Laser**, **PrintJet PRO**, **MCP Plus** and **MC-Mobilo** printers plus those of the ThermoMark series can be used for printing.

The unique printing speed of the **SMark-Laser** makes it a real winner. The **PrintJet PRO** is the reference model in industrial marking for high-resolution printing and maximum wipe and scratch resistance. The **MCP Plus** plotter provides you with good flexibility because with its positioning frame it can handle more than 120 different types of marker in the MultiCard format. The **MC-Mobilo** is the ideal printer for labelling on site without a PC and a mains power supply, directly during installation work. The printers of the ThermoMark series are ideal for printing labels and/or shrinkable sleeves in excellent quality.



Type of marker	Printer				
	SMark-Laser	PrintJet PRO	MCP Plus plotter	MC-Mobilo	ThermoMark
Connector markers					
DEK	●	●	●	●	
WS	●	●	●	● ¹	
ZS	●	●	●	●	
MF	●	●	●	●	
Cable and wire markers					
SF	●	●	● ²	● ²	
SFX	●	●	●	●	
SFC	●	●	●	●	
TM-I	●	●	●	●	
TwinMark					●
Device markers					
DMC	●	●	●	●	
ESG	●	●	●	●	
SM	●	●	●	●	
ClipCard	●	●	●	●	
Labels					
THM MT					●
THM WriteOn					●

¹ Except WS 15/5

² SF 4 to 6 only with corresponding positioning frame

SMark-Laser

The **SMark-Laser** is a laser printer for printing on markers in the MultiCard format. The fast production of large numbers of individually printed markers is the special feature of this printer. The automatic feed function of the **SMark-Laser** increases productivity even further and ensures that your markers are available without delay.

- Fast printing speed, 4 MultiCards per minute
- Markers can be used immediately
- Fast operation irrespective of the file size
- Good flexibility thanks to production of markers in MultiCard format to meet users' requirements
- Reduces stocks because only blank markers are required
- Printing of graphics and logos as well
- Optional automatic feed for large quantities
- Can be used together with the Weidmüller **M-Print® PRO** software
- Not suitable for self-adhesive MultiCard markers



Technical data

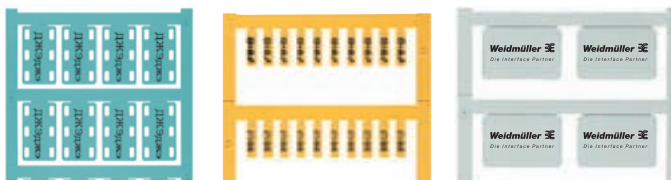
Type	SMark-Laser
Application	Prints all MultiCards
Technology	Laser printer
Printing speed	4 MultiCards per minute
Print quality	600 dpi
Printer drivers	WIN 9.x, NT, 2000/XP
Software	M-Print settings, commercially-available standard software
System requirements	Windows® 2000/XP/Vista
Feed	Manual or with optional loader
Interfaces	Centronics optional, Apple Talk
Power supply	AC 230 V / 50 Hz / 16 A
Ambient conditions	20 °C – 35 °C
Dimensions: (L x W x H)	1000 x 430 x 380 mm
Scope of supply	Laser printer, power cable, printer drivers, manual, interface cable, M-Print® PRO software

Ordering data

SMark-Laser

Type	Order No.
SMark-Laser	1767090000
Rack	1782880000
Special toner cartridge	1770070000

Print options



Inkjet printer

A detailed look at the new PrintJet PRO

The new PrintJet PRO is the epitome of the modern, innovative, high-tech printer generation. Aesthetically pleasing on the outside, it is packed full of advantageous product features that guarantee money savings and increased efficiency on the inside.

Cutting-edge technology

- Fast
- Colour printing
- Top-quality, resistant printing
- Flexible connection options, from LAN ports to USB ports



Reliability as standard

- Perfect for constant use
- Low-maintenance
- Ideal for large quantities
- High-capacity ink cartridges



The right choice for safety

- Water-based ink – no hazardous waste
- Environmentally friendly, no ozone emissions
- No odours
- Auto stop when printer is opened
- Low noise level



Ease of use

- Ergonomic due to pivoted display
- Choice of 10 languages
- Easy to replace ink cartridges
- Automatic MultiCard feed via integrated loader



PrintJet PRO

The **PrintJet PRO** inkjet printer prints markers for electric connectivity. These markers can be used for clear equipment identification on devices, cables and connectors. The labelling makes servicing, maintenance and troubleshooting much easier. Water-based ink is used for the black or spot colour printing. The print is crystal clear and resistant to environmental influences.

The **PrintJet PRO** prints plastic markers in **MultiCard** format. In combination with the user-friendly **M-Print® PRO** software and the attached loader, the printer becomes an essential part of the production. The inkjet process being used, the subsequent fusing, as well as the printer cartridge and ink have all been specially adapted by Weidmüller for industrial use. The printer has excellent long-term use capabilities, thanks to its integrated loader.

- Top-quality, resistant printing
- Spot colour print
- Perfect for constant use
- Integrated loader for 20 MultiCards
- Ideal for large quantities
- The display shows all relevant information
- Flexible connection options, from LAN ports to USB ports



Technical data

PrintJet PRO	
Type	PrintJet PRO
Application	Prints MultiCard markers
Technology	Inkjet process
Print quality	600 / 1.200 dpi
Printer drivers	Windows® 2000/XP/VISTA
Print software	M-Print® PRO
System requirements	Windows® 2000/XP/VISTA
Feed	Integrated loader
Fusing	Thermal fusing
Interface	USB, LAN
Power supply	AC 230 V or AC 115 V
Location	Office conditions
Ambient temperature	20° to 35 °C
Dimensions (L x W x H)	1060 x 500 x 310 mm
Weight	33 kg
Cartridge system	Ink cartridge, CMYK (480.000 characters, Arial font size 6)
Scope of supply	PrintJet printer, power cable, printer drivers, manuals (CD), USB cable, M-Print® PRO software

Ordering data

PrintJet PRO

Type	Order No.	
PrintJet PRO 115V	1024050000	
PrintJet PRO 230V	1001180001	
Accessories		
PJ PRO TNTK INK SET BK	Ink tank starter set, black	1027090000
PJ PRO TNTK INK SET COL	Ink tank starter set, colour	1027110000
PJ PRO TNTK INK K	● Ink tank Black	1027040000
PJ PRO TNTK INK C	● Ink tank Cyan	1027050000
PJ PRO TNTK INK M	● Ink tank Magenta	1027060000
PJ PRO TNTK INK Y	● Ink tank Yellow	1027070000
PJ PRO TNTK FL	Ink tank fluid	1027080000
Ink tank PrintJet II		1858920000
Clean Unit PrintJet II		1858950000
Ink tank PrintJet		1797460000
Clean Unit PrintJet		4062150000

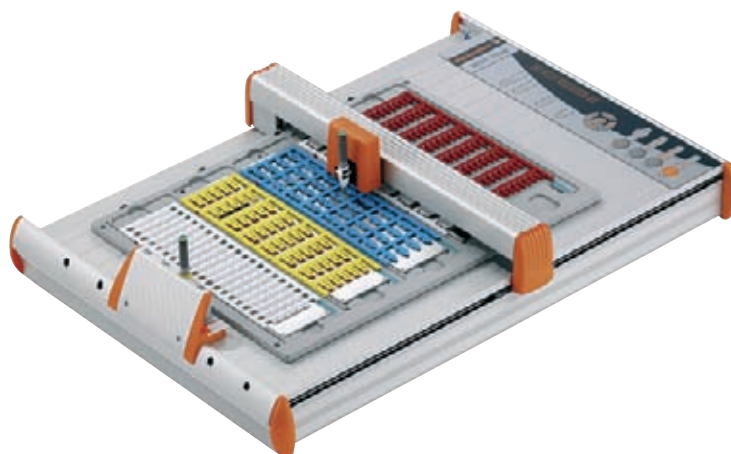
Note: Available starting third quarter, 2008

Plotter

MCP Plus

The plotter **MCP Plus** complements the Weidmüller MultiCard concept. It is suitable for smaller quantities of markers and when only part of a MultiCard is to be printed on. The special positioning frame for five MultiCards increases productivity by 20 % over comparable systems. With the positioning frame for SlimFix markers sizes 4 to 6, printing on more than 140 MultiCard types for terminals, cables, wires and equipment is possible. Labels are printed with the MCP-Label positioning frame. Suitable for use with the Weidmüller **M-Print® PRO** software.

- 2 positioning frames for more than 140 MultiCard types
- MultiCards easily fitted into the frame
- Easy to use with partly used MultiCards
- Automatic pen activation function
- Safe storage of the plotter pens



Technical data

Type	Plotter
Application	printing of MultiCard markers and labels
Technology	plotting technique
Print software	M-Print® PRO
System requirements	Windows 2000/XP/Vista
Interface	Parallel Centronics / USB
Power supply	230/115 V AC
Feed	manual
Location	office conditions
Ambient temperature	10 °C – 35 °C
Dimensions (L x W x H)	660 x 440 x 125 mm
Weight	approx. 8 kg
Scope of supply	MCP Plus with Centronics cable, USB cable, power pack (100-240 V AC/50-60 Hz), Euro and US plugs, MultiCard positioning frame, 0.25 mm plotter pen, M-Print® PRO software and manual

Ordering data

MCP Plus

Type	Order No.
MCP Plus plotter set	1925000000
Note:	



MCP positioning frames

Ordering data

Type	for	Qty	Order No.
MCP pos. frame	MultiCards	1	1924360000
MCP pos. frame SF 4-6	SlimFix sizes 4 to 6	1	1924310000
MCP pos. frame labels	Labels	1	1924370000

MCP plotter pens

Type	for	Qty	Order No.
Plotter pen 0.18	Reusable pen	1	1768570000
Plotter pen 0.25	Reusable pen	1	1768540000
Plotter pen 0.25 P ink	Disposable pen 8 ml Not for CLI T sleeves	1	1920640000
Plotter pen 0.35	Reusable pen	1	1768550000
Plotter pen 0.35 P ink	Disposable pen 8 ml Not for CLI T sleeves	1	1920650000
Plotter pen 0.50	Reusable pen	1	1768560000
Plotter pen 0.70 P-INK	Einwegstift 8 ml Not for CLI T sleeves	1	1011450000

MCP ink

Type	Contents	Qty	Order No.
P ink	22 ml Not for CLI T sleeves	1	1924340000
Ink 2000	25 ml	1	1772120000

MCP miscellaneous

Type	Contents	Qty	Order No.
MCP adhesive strips		5	1924320000
P cleaner	22 ml	1	1924330000
MCP cover		1	1924350000
Cleaner Clean 2000 25 ml		1	1772130000
Inlay for MCP Plus		1	1935130000



Accessories - STI pen

The STI-S felt tip pen is suitable for labelling blank Weidmüller marking products. It can be used for handwritten labels or, in conjunction with the STI-S adapter, for a plotter printout. A black, waterproof ink is used.

Ordering data

Type	Qty	Order No.
Adapter aluminium STI pen	1	1762440000
STI pen SW	10	0508401694

Plotter

MC-Mobilo

The MC-Mobilo allows users to work directly at place. There is no need for a PC and no need for a power supply so electrical equipment can be labelled anywhere, anytime. The rechargeable battery provides power for up to 3 hours. The universal inlay enables up to 120 different marker types of the MultiCard range to be processed.



Technical data

Type	Plotter
Application	Printing of MultiCard markers
Technology	Plotting technique
Print software	WM-Print
Interface	RS 232
Power supply	AC 230 / AC 115 V
Feed	manual
Location	can be used anywhere
Ambient temperature	15 – 30 °C
Dimensions (L x W x H)	380 x 190 x 68 mm
Weight	3 kg
Scope of supply	MC-Mobilo, universal power unit, including adapters (EURO, UK, USA), data cassette, operating instructions, PowerPack, PC connecting cable, WM-Print, universal MultiCard mounting frame, 0.25 mm plotter pen, carry case

Ordering data

MC-Mobilo

	Qty.	Order No.
MC-Mobilo		
MC-Mobilo 110/220 V	1	1741260001
MC-Mobilo Accessories		
Printkit (Ink 2000, Clean 2000, Plotter-Pen 0.25)	1	1686920000
Frame inlay SF 4-6	1	1802180000
Accessories Plotter IP220/MC-Mobilo		
P-Ink	Not suitable for CLI-T sleeves	1 1924340000
Ink 2000 25 ml		1 1772120000
P cleaner		1 1924330000
Printkit		1 1686920000
Plotter Pen 0.18		1 1768570000
Plotter Pen 0.25		1 1768540000
Plotter Pen 0.25 P-Ink	Not suitable for CLI-T sleeves	1 1920640000
Plotter Pen 0.35		1 1768550000
Plotter Pen 0.35 P-Ink	Not suitable for CLI-T sleeves	1 1920650000
Plotter Pen 0.50		1 1768560000
Plotter Pen 0.70 P-Ink	Not suitable for CLI-T sleeves	1 1011450000
Cleaner Clean 2000 25 ml		1 1772130000
Accessories – STI pen		
Adapter aluminium STI pen	1	1762440000
STI pen SW	Not suitable for CLI-T sleeves	10 0508401694

THM-Plus

The **THM-Plus** printer uses thermal transfer technology for the industrial printing of labels and shrink sleeves. A robust metal housing protects the printer against dust and dirt. The printer provides high-quality output and is suitable for printing on different materials. This user-friendly system functions with the Weidmüller **M-Print® PRO** software.

- A special firmware optimizes printing on heat shrinkable sleeves
- Easy exchange of materials and ribbons
- Memory card slot – Compact Flash type 1
- Easy calibration
- Suitable for both types of shrinkable sleeve and also Weidmüller labels on reels



Technical data

Type	THM-Plus Printer
Application	Printing of labels and shrinkable sleeves
Technology	Thermal transfer
Printing speed	50 – 150 mm/s
Printing quality	300 dpi
Printer drivers	Windows® 2000/XP/Vista
Software	M-Print® PRO
System requirements	Windows® 2000/XP/Vista
Interface	Seriell RS232, Ethernet 10/100 Base T, USB
Power supply	100/240 V AC, 50-60 Hz, max. 250 W
Dimensions (L x W x H)	242 x 446 x 274 mm
Weight	9 kg
Scope of supply	THM-Plus Printer, USB cable, power cable, printer drivers, manuals (CD), M-Print® PRO software
Accessories – Ribbon WR 90/300	
Colour	Black
Basis	Wax/resin
Suitable for	HSS (standard variants)
Width x length	90 mm x 300 metres
Accessories – Ribbon R 83/300	
Colour	Black
Basis	Resin
Suitable for	HSS-HF (halogen-free variants)
Width x length	83 mm x 300 metres

Ordering data

THM-Plus

	Type	Application	Order No.
Printer	THM-Plus Printer		1962340000
Ribbons	Ribbon R 83/300	Free from halogens	1962370000
	Ribbon WR 90/300	Standard	1962360000
	Hi Res ribbon, 280 m	Label	1790650000
Adapter	Centronic-USB2.0 Adapter		1965140000

Thermal transfer printer

HSS-2001

The **HSS-2001** printer uses thermal transfer technology for the industrial printing of shrink sleeves. A robust metal housing protects the printer against dust and dirt. The printer provides high-quality output and is suitable for printing on different materials. This user-friendly system functions with the Weidmüller **M-Print® PRO** software.

- Printing on 2 sides possible thanks to independently operating print heads
- Optional take-up reel
- Ideal for reels with up to 10.000 sleeves
- Suitable for both variants of heat shrinkable sleeves and ribbons



Technical data

Type	HSS-2001 Printer
Application	Printing of shrinkable sleeves
Technology	Thermal transfer
Printing speed	50 – 127 mm/s
Printing quality	304 dpi
Printer drivers	Windows® 2000/XP
Software	M-Print® PRO
System requirements	Windows® 2000/XP/Vista
Interface	Seriell RS232, Parallel Centronics
Power supply	100/240 V AC, 50-60 Hz, max. 400 W
Dimensions (L x W x H)	559 x 446 x 508 mm
Weight	38 kg
Scope of supply	HSS-2001 Printer, Centronics cable, printer drivers, manual, M-Print® PRO software
Accessories – Ribbon WR 90/300	
Colour	Black
Basis	Wax/resin
Suitable for	HSS (standard variants)
Width x length	90 mm x 300 metres
Accessories – Ribbon R 83/300	
Colour	Black
Basis	Resin
Suitable for	HSS-HF (halogen-free variants)
Width x length	83 mm x 300 metres

Ordering data

HSS-2001

	Type	Application	Order No.
Printer	HSS-2001 Printer		1962350000
Ribbons	Ribbon R 83/300	Free from halogens	1962370000
	Ribbon WR 90/300	Standard	1962360000

THM-Pro

The **THM-Pro** printer uses thermal transfer technology for the industrial printing of labels. A robust metal housing protects the printer against dust and dirt. The printer provides high-quality output and is suitable for printing on different materials. This user-friendly system functions with the Weidmüller **M-Print® PRO** software.

- Printer for producing texts, graphics and barcodes
- Automatic positioning of labels in the printer for perfectly centred printing on every label
- Robust printing thanks to the HiRes ribbon
- Functions with the Weidmüller **M-Print® PRO** software



Technical data

Type	THM-Pro Printer
Application	Printing of labels
Technology	Thermal transfer
Printing speed	80 mm/s
Printing quality	204 dpi
Printer drivers	Windows® 2000/XP
Software	M-Print® PRO
System requirements	Windows® 2000/XP/Vista
Interface	Centronics / USB
Power supply	220 V
Location	office conditions
Ambient temperature	-10 °C bis +35 °C
Dimensions (L x W x H)	350 x 250 x 220 mm
Scope of supply	ribbon (HiRes), printer drivers, power cable, parallel cable, USB cable, M-Print® PRO software

Ordering data

THM-Pro

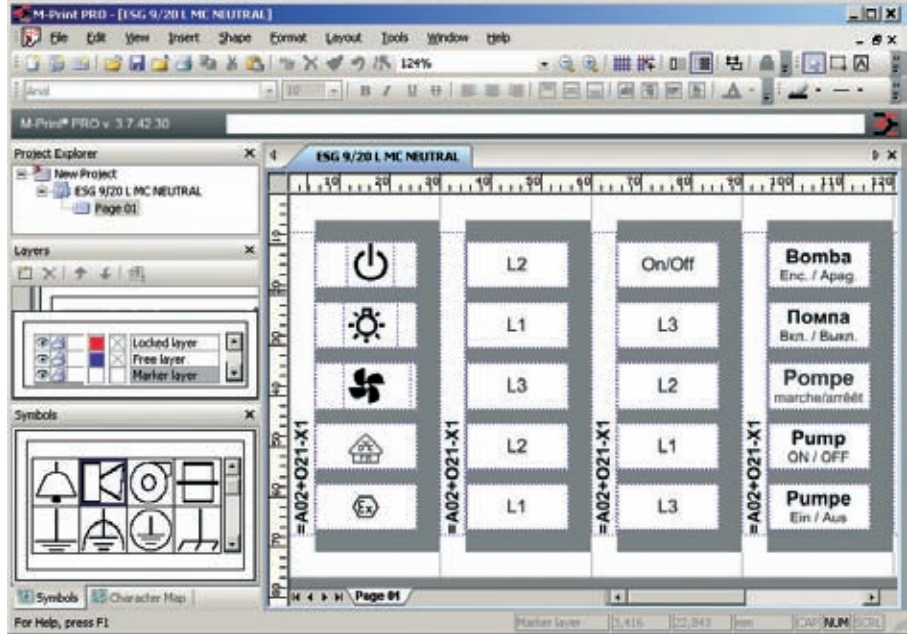
Type				Order No.
THM Pro Printer				1785240000
Printing foil	Material	Width (mm)		
HiRes ribbon, 280 m	Resin	110		1790650000

Software

M-Print® PRO Label Designer

Print and ordering software for markers and labels

M-Print® PRO is a professional software for printing and ordering Weidmüller markers and labels under Windows®. This software helps you to optimise your processes for marking electrical equipment. You can design, print and order your marking materials effortlessly, professionally and quickly: texts, frames, lines, graphics, barcodes, serial numbers and photos.



Technical data

Here is an overview of the main functions

- Integrated product catalogue for all labels and markers, including images and links to the relevant web pages and product data sheets
- Markers and labels can be designed in as many levels as required
- Custom formatting of individual text characters (RTF)
- Perform copy-and-paste functions with texts and their formats
- Supports UNICODE for foreign-language texts, such as Russian, Chinese, Polish, etc.
- Enter data on labels or worksheet
- Permanent print preview: see how the printout will look during the design phase
- Alphanumeric counts and sequences
- Extensive range of image formats (*.bmp, *.wmf, *.png, *.ico, *.jpeg, *.tif, *.gif)
- Image library including all the important symbols used in electrical engineering
- Assign product to specific printer; for example, ESG 9/20 to PrintJet, LaserMark to laser printer, etc.
- Output devices supported: PrintJet I+II, SMark-Laser, ThermoCard, THM as well as standard printers with Windows drivers, plotter MCP Plus
- Optimum and rapid adjustment of the output devices
- Online update service via the Internet
- Interface to RailDesigner®
- Import assistant to create your own import filter for numerous file formats (*.txt, *.asc, *.mak, *.wei, *.tmf, etc.)
- Imports data from CAE systems

Operating systems supported

WINDOWS® 2000/XP/Vista

System requirements

- RAM > 64 MB
- Processor > Pentium PIII or comparable model
- Graphics > 800 x 600 pixels with 256 colours
optimum: 1024 x 768 with 16-bit High Colour
- Hard drive > 90 MB free storage
- Miscellaneous mouse, keyboard, CD-ROM drive (to install the software)

M-Print® PRO is available in two editions:

- M-Print® PRO Standard Edition for professional printing results with all of Weidmüller's marking materials
- M-Print® PRO Advanced Edition for professional printing results with all of Weidmüller's marking materials plus labels to customer specification

Ordering data

M-Print® PRO

Type	Order No.
M-Print® PRO	1905490000
M-Print® PRO advanced	1905500000