



Import of source data
in SEE Electrical/CADDy⁺⁺
Version 2005



A. **Data protection**

Before importation please make a copy of the existing type data base. You will find it by default in the subfolder ...Templates under your SEE Electrical/CADdy⁺⁺ folder. The file is named TYPES.CPS.

B. **Weidmüller article source data**

The Weidmüller article source data are provided in different categories. This allows you to read in only the articles you need.

The following article source data are available:

Article	Name of Excel-Spreadsheet
Overvoltage protection, lightning arrester, WAVE-Filter	Weidmüller_F_EN.XLS
Relays	Weidmüller_K_EN.XLS
PLC-Moduls	Weidmüller_PLC_EN.XLS
Current supply	Weidmüller_T_EN.XLS
Mounting rails	Weidmüller_Rail_EN.XLS
Terminals	Weidmüller_X_EN.XLS

If possible, please copy the Excel-spreadsheets for the import (<Filename>.TXF) in the Import_Weidmüller subfolder of the ...Symbols of SEE Electrical/CADdy⁺⁺ folder.

C. **Data Import**

The data import is possible for the Standard (till now economy) and Advanced (till now professional) software levels of SEE Electrical/CADdy⁺⁺ and not for Basic or Light.

Proceed as follows:

1. Start SEE Electrical/CADdy⁺⁺.
2. Open an existing workspace or create a new project.
3. Open a page in a circuit diagram or create a new page. The import can only take place if a page is open in the „Circuit diagrams" module.
4. Select the **"Functions"** menu and the **"Type data base"** function afterwards.
5. In **"Import/Export"** menu of the **Type Database Manager** dialogue that appears, find then the **"Import From Excel"** function.

Import Types from Spreadsheet...

Excel Spreadsheet:

File Name ...

Import Rows from Line to Line In spreadsheet...

Standard Properties:

Type or Article Number Column

Supplier Column

Supplier Name

Goodsgroup Column

Goodsgroup Name

Type or Article Description Column

Other Properties:

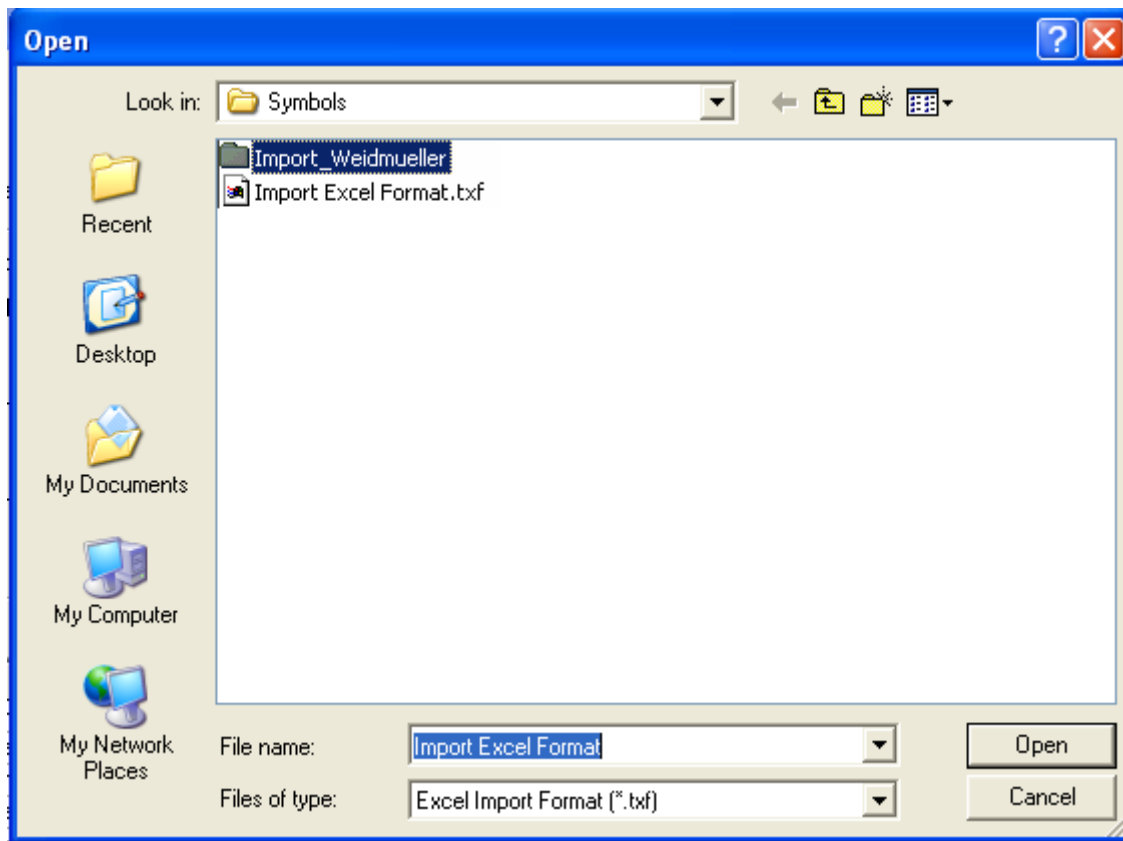
Property	Column
Name	E
Function	F
Length	G
Width	H
Height	I
Depth	J


Record 1

Load Settings Save Settings Import Close

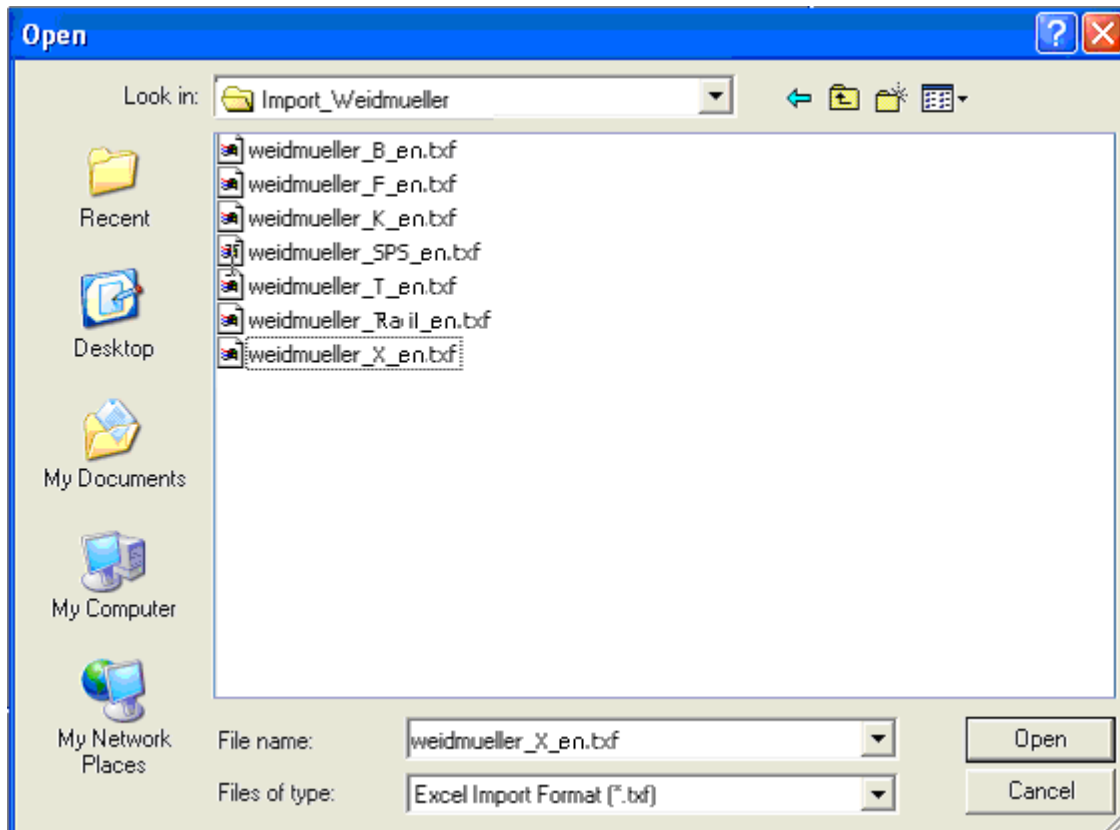
If an article is already present in the type data base, the data is overwritten. Not existing articles are created. Criterion is the type/article name.

6. For each category of Weidmüller articles source data, there are strictly adapted importation settings available. Load the settings for the requested category .
7. A new dialogue appears.



If you have copied, as stated above, your source data of Weidmüller-articles in the Import_Weidmüller subfolder of the...Symbols of SEE Electrical/CADdy⁺⁺ folder, double click on  Import_Weidmueller to access this folder.

8. Select the import format by double clicking, e.g. Weidmüller_X_EN.TXF, if you wish to import source data for terminals.




9. The settings have been loaded.

Property	Column
Name	E
Function	F
Length	G
Width	H
Height	I
Depth	J

Record 1

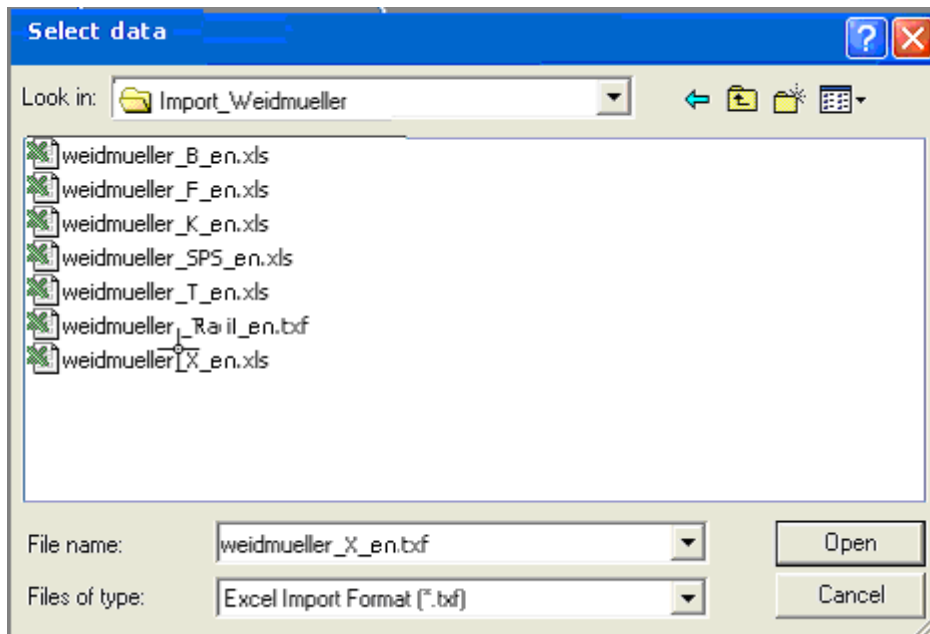
Buttons: Load Settings, Save Settings, Import, Close


Select now the location of the Excel file with the article source data by clicking the  button behind the File Name input field:

Excel Spreadsheet:

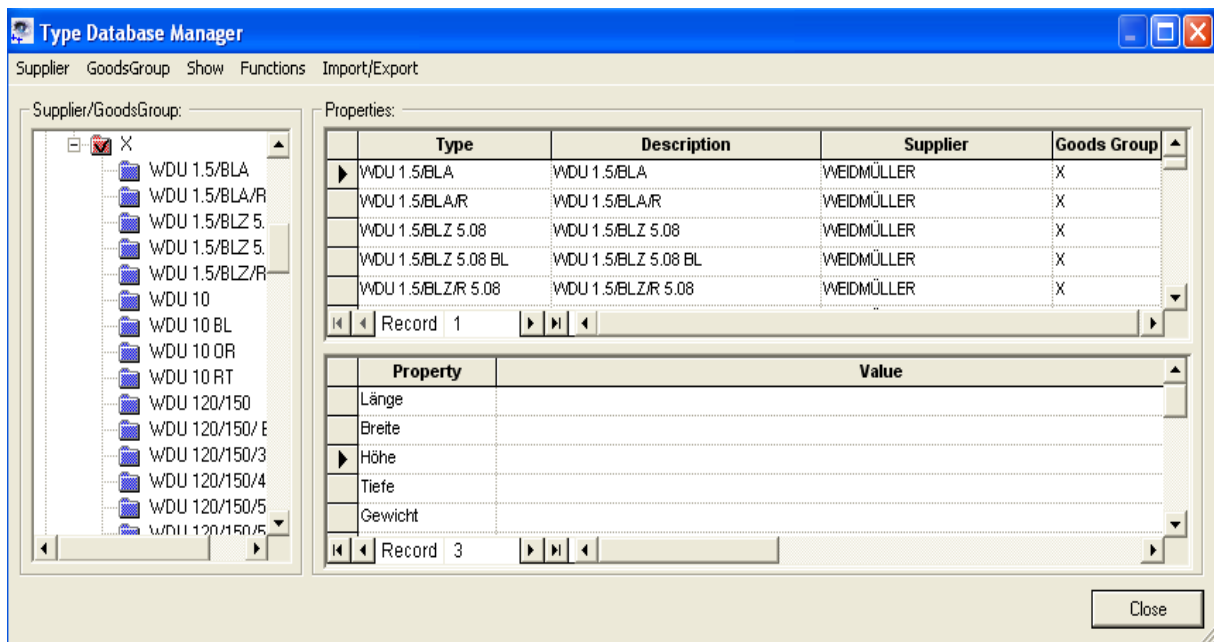
File Name 

10. When the Excel files with the Weidmüller articles source data are displayed, select the required one by double clicking on it.



11. Start importing with .

After you finish the import, you can find the source data in "Weidmüller" supplier for the related goods groups.



If you would have questions concerning SEE Electrical/CADdy⁺⁺, IGE+XAO software sales GmbH remains at your disposal. Please contact your local dealer.